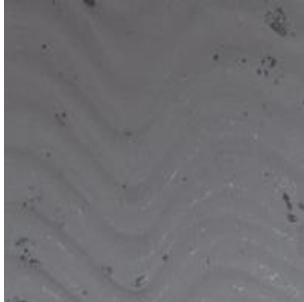


Fixing Aerogel pre-primed fleece tiles and blanket.



1. Ensure all surfaces are clean and dry and free from any loose material and, using a toothed trowel, apply a 2-3mm even coating of Aerogel fixing adhesive.



2. Bed the Aerogel fleece tile into the adhesive. When dry it is ready for plastering.

Additional Fixing options



(a)

Small areas may not require mechanical fixings; however larger areas can be installed in accordance to the task by either:

(a) using insulation washers on the joints, or:



(b) using insulation washers spaced at 600 centres with AR fibreglass mesh as supplied.

First Test the adhesive on a small area to check the attachment. Ensure no gaps are left between the tiles. Do not use on damp walls.

Aerogel Fix Adhesive has been independently tested as: Non-combustible in accordance with: CAN/ULC S114-5 (Relative Standard: BS EN 13501-1:2007) and Class 1 vapour open in accordance with EN ISO 7783. Patent Pending. Nov 2015.